



COPPER SPRINGS

THE RIVERWALK

FEATURES:

- 600 SQUARE FEET
- 1 BEDROOMS 1 BATHS
- GRANITE COUNTERTOPS
- DESIGNER CABINETRY
- STAINLESS APPLIANCES
- MICROWAVE OVER RANGE
- FRENCH DOOR REFRIGERATOR
- GARBAGE DISPOSAL
- CERAMIC BACKSPLASH
- NINE FOOT CEILINGS
- DELUXE MOLDING PACKAGE
- OPEN FLOOR PLAN
- DESIGNER MIRRORS IN BATH
- FIRE SUPPRESSANT SPRINKLER SYSTEM
- PRIVATE REAR PATIO
- WOODEN SHELVING IN CLOSETS
- GROUND LEVEL ENTRANCE
- ENGINEERED HARDWOOD FLOORING
- ENERGY EFFICIENT DESIGN
- HIGH EFFICIENCY HEAT PUMPS
- LED LIGHTING
- WASHER/DRYER HOOKUPS



* RENDERINGS ARE ARTIST INTERPRETATIONS. EXACT SQUARE FOOTAGE COLORS, FINISHES, DOORS, OR WINDOW LOCATIONS VARIES.



COPPER SPRINGS

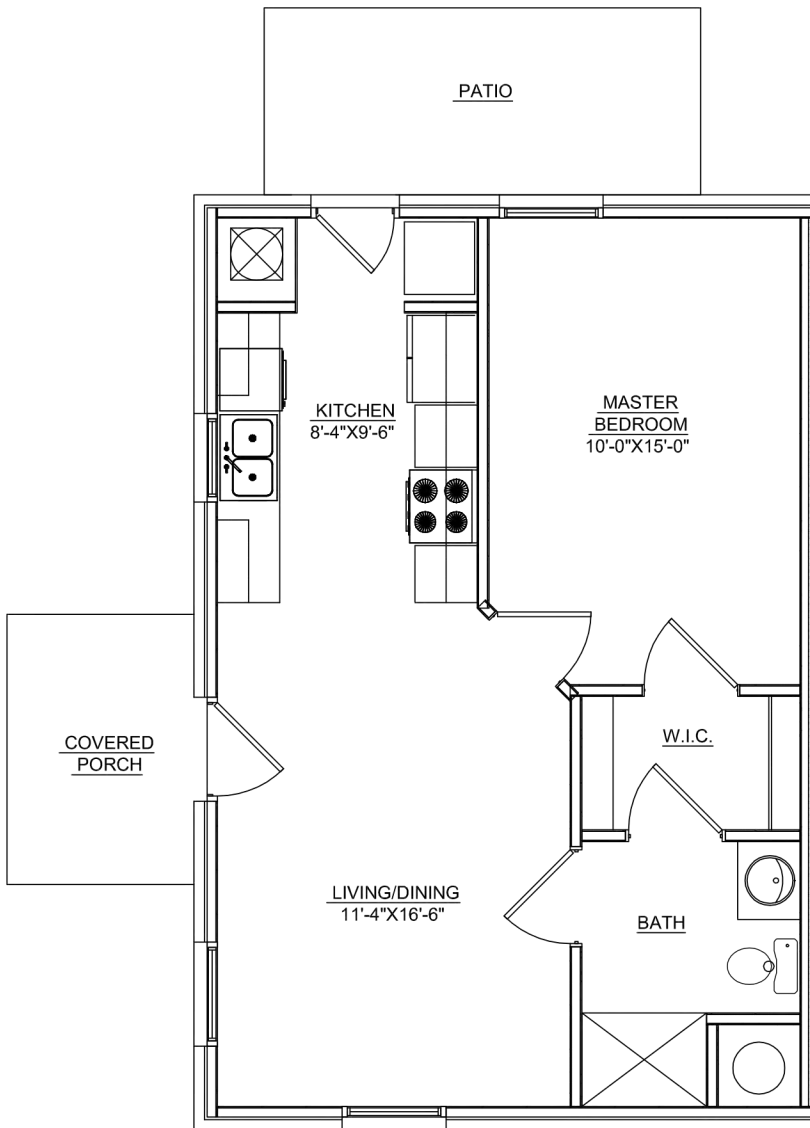


(931)525-6090



INFO@MEADOWSPROPERTIES.COM

THE RIVERWALK



COMMUNITY AMMENITIES

- PRIVATE RESIDENTIAL POOL
- PRIVATE RESIDENTIAL GYM
- PRIVATE RESIDENTIAL BBQ PAVILION
- PRIVATE RESIDENTIAL GRILLING AREA
- ON-SITE MANAGEMENT
- HIGH SPEED INTERNET & CABLE AVAILABLE
- 24 HOUR SURVEILLANCE
- ON-SITE VENDING
- ON-SITE DOLLAR GENERAL
- MINI WAREHOUSES AVAILABLE
- ONSITE VENDING MACHINE AREA
- ASSIGNED PARKING
- COVERED BUS PORT

